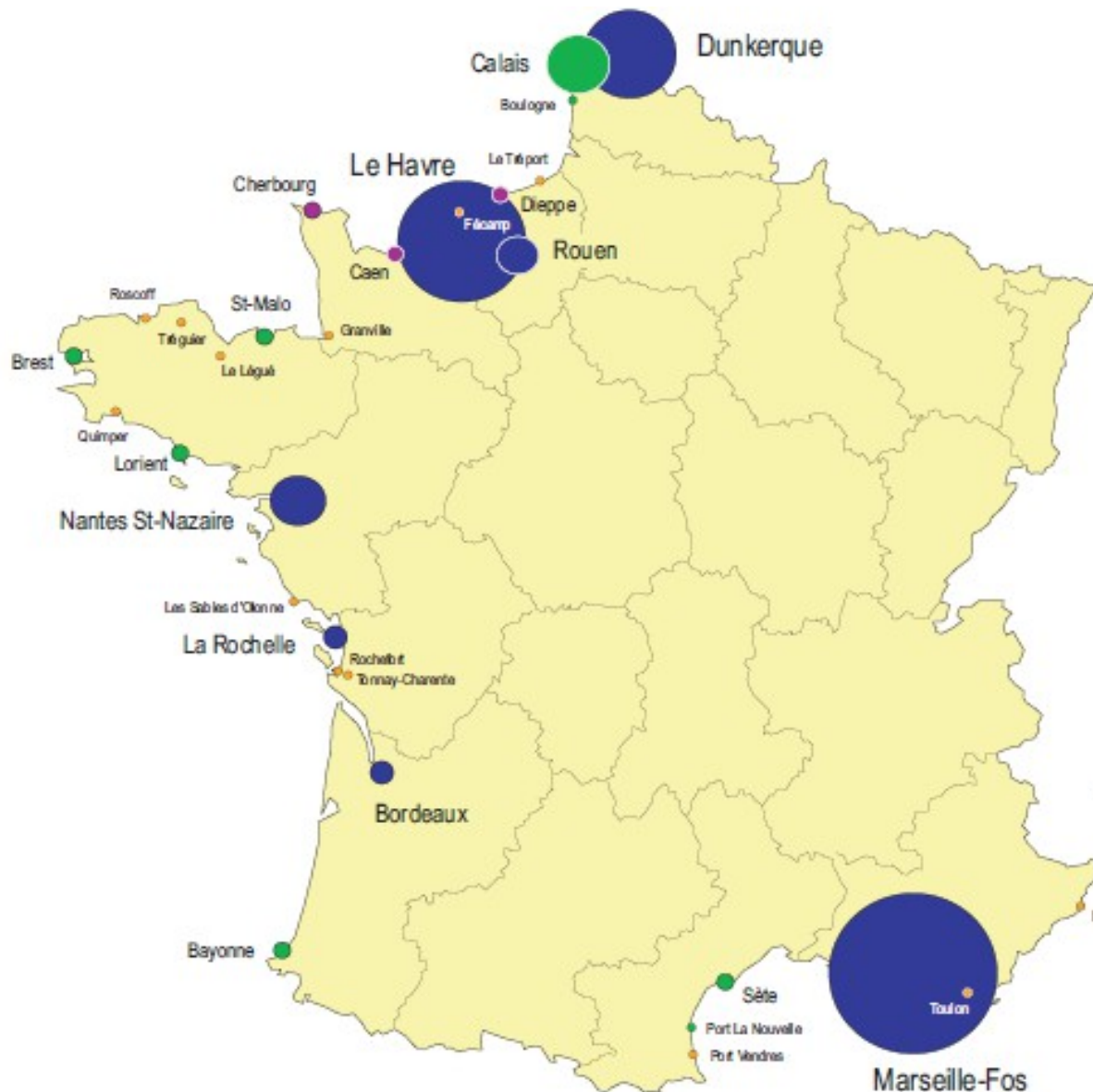
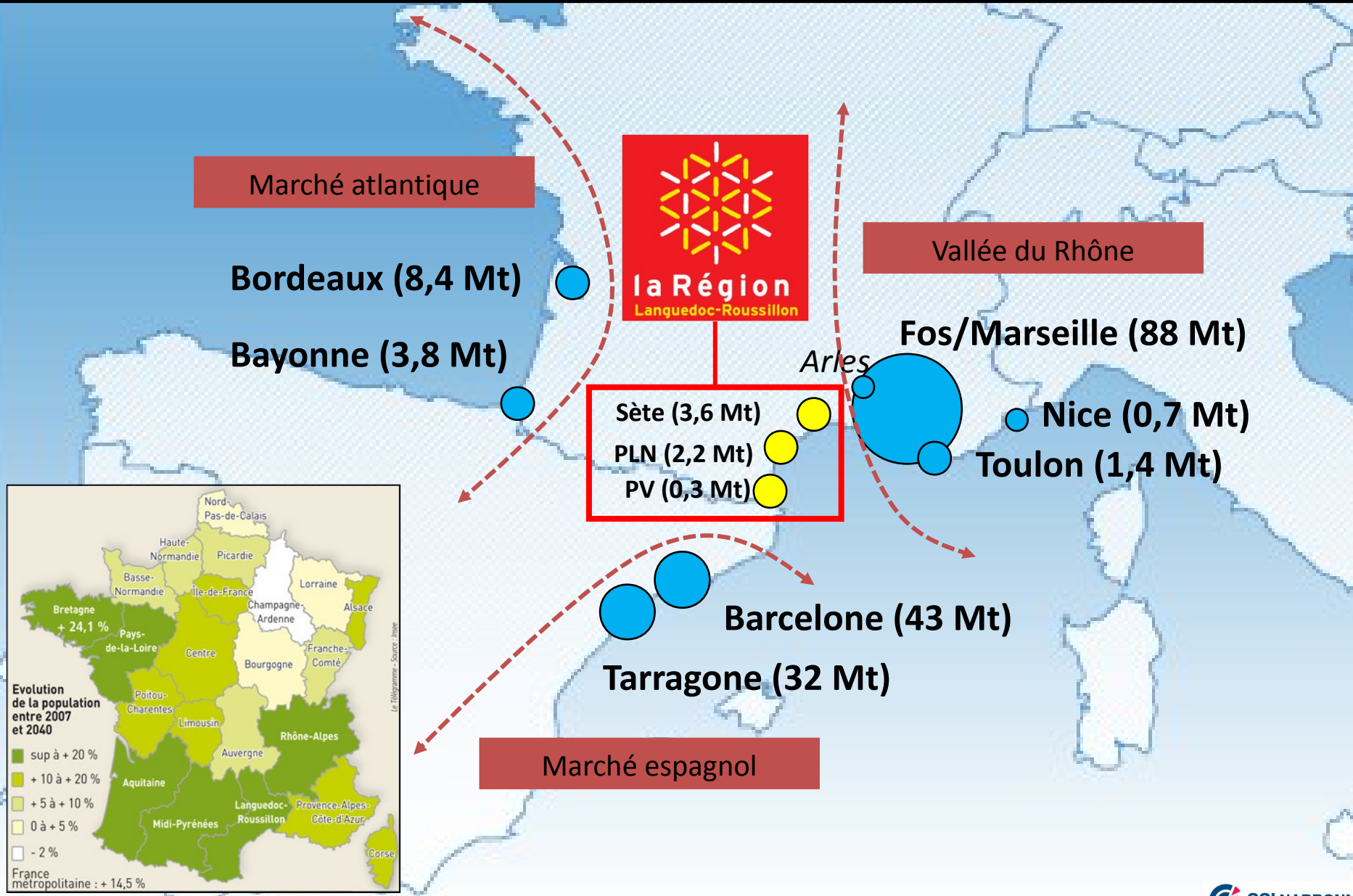




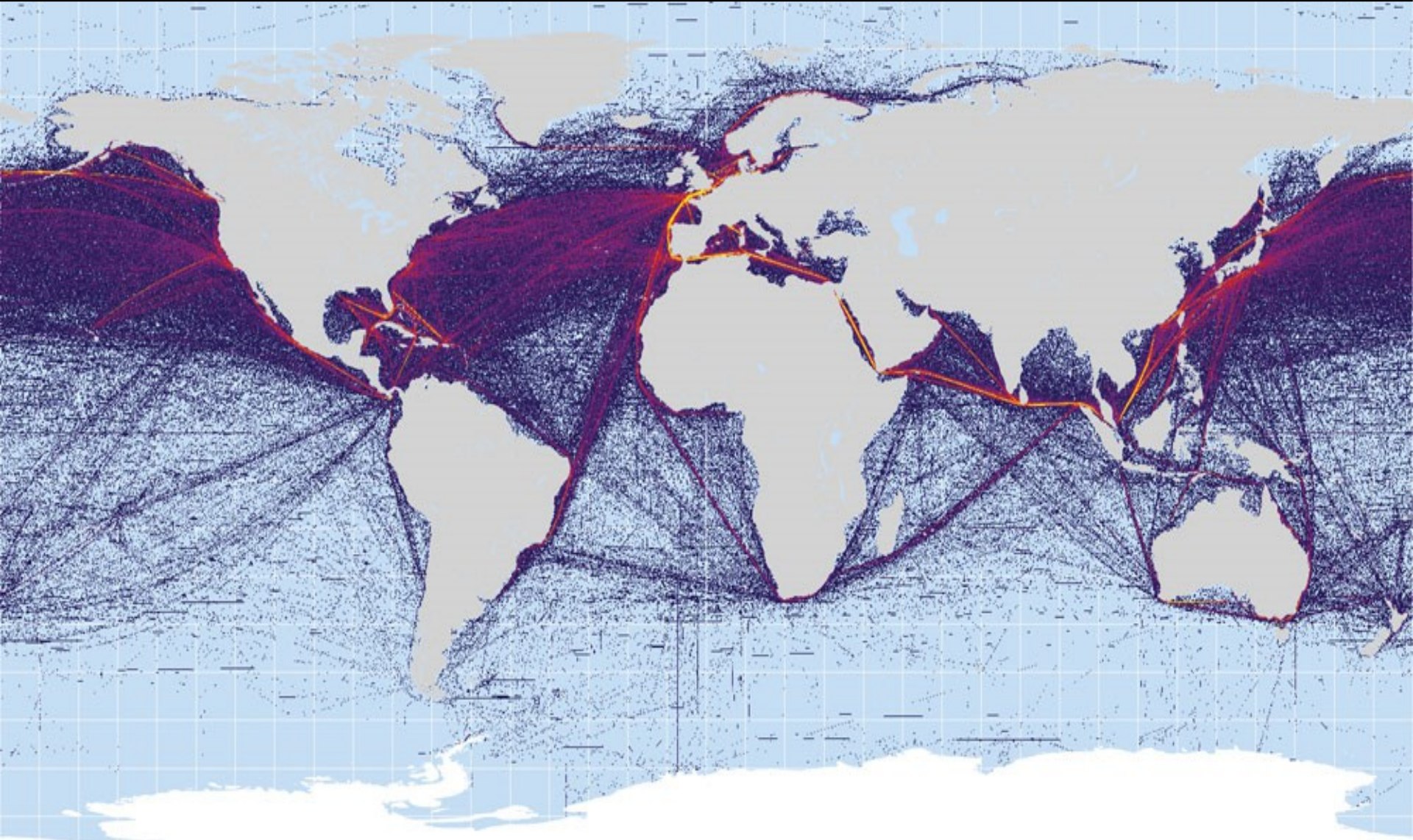
# Hinterland



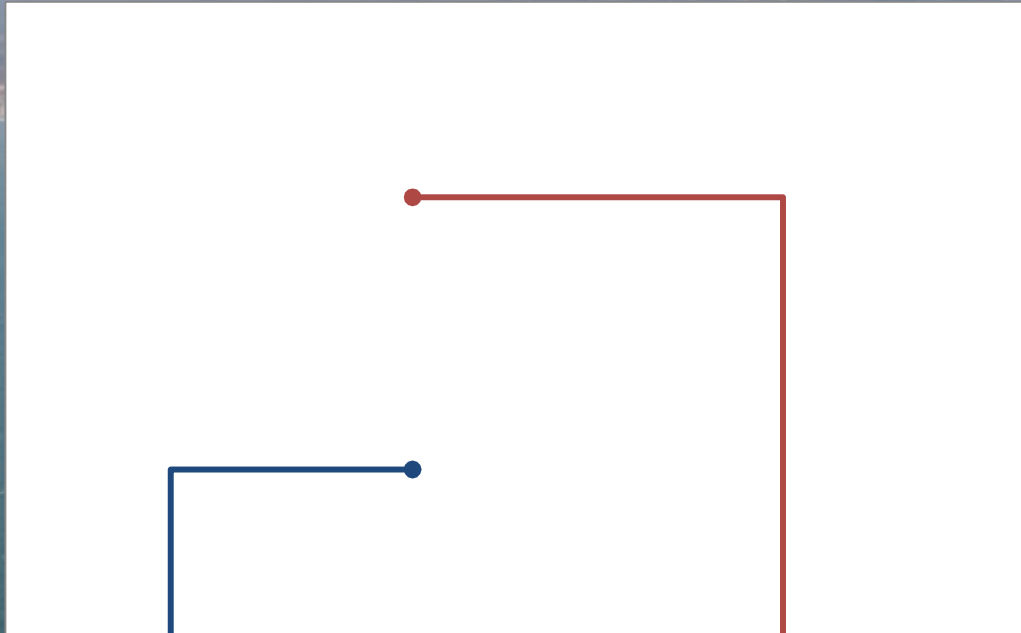
1	Marseille	88 190 000
2	Le Havre	67 561 000
3	Dunkerque	47 522 000
4	Calais	38 460 000
5	Nantes	30 651 000
6	Rouen	25 397 000
7	La Rochelle	8 444 000
8	Bordeaux	8 381 000
9	Bayonne	3 725 000
10	<b>Sète</b>	<b>3 605 000</b>
11	Caen	3 583 000
12	Brest	3 041 000
13	Lorient	2 688 000
14	<b>Port-la-Nouvelle</b>	<b>2 147 000</b>
15	St Malo	1 832 000
16	Cherbourg	1 786 000
17	Dieppe	1 617 000
18	Toulon	1 335 000



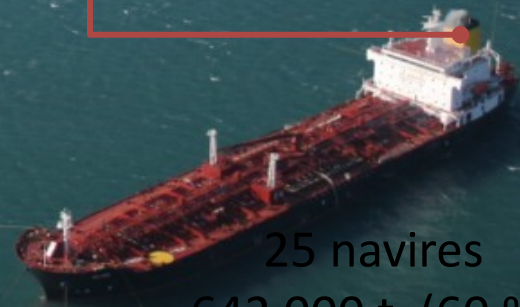
# Principales routes maritimes



# Produits pétroliers



102 navires  
434 000 t (40 %)

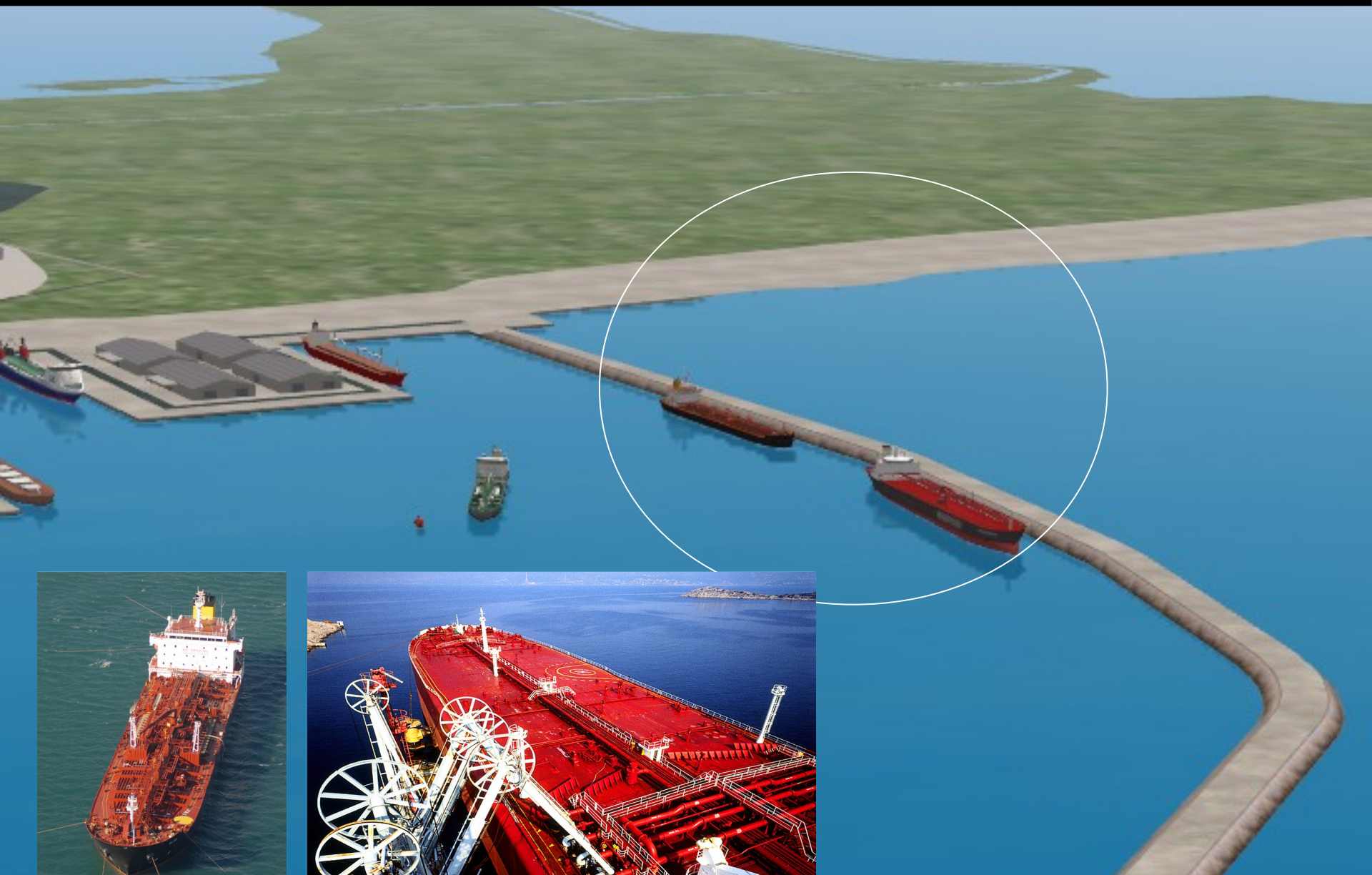


25 navires  
642 000 t (60 %)

# Produits pétroliers

Pétroliers + chimiques > 30 000 Tpl  
Moins de 20 ans

# Produits pétroliers



# Liquides

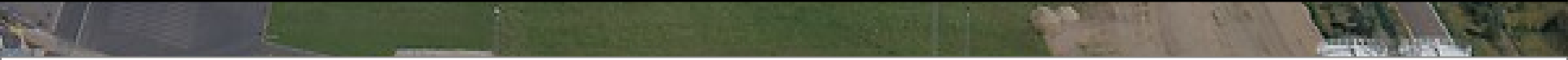




# Liquides



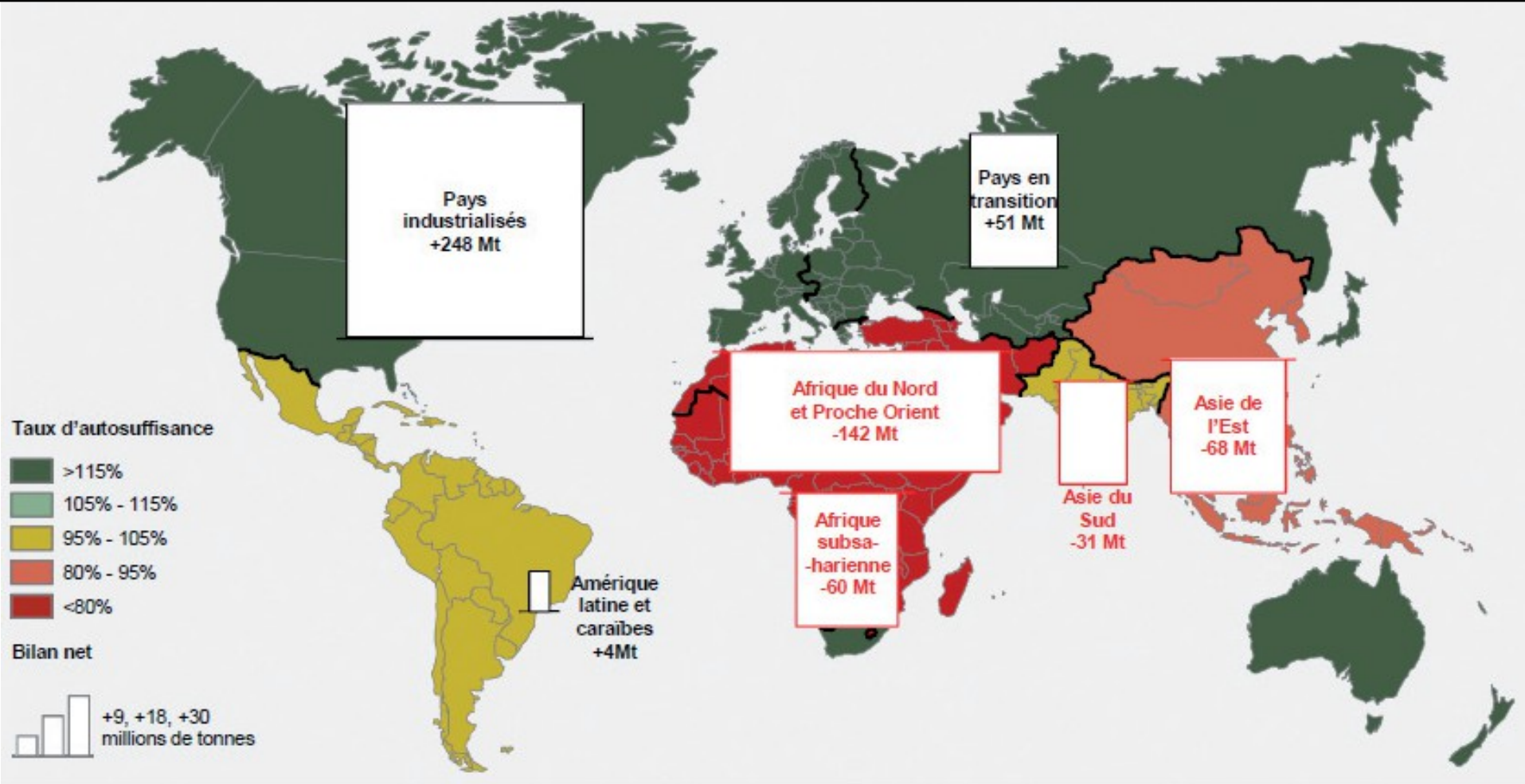
# Liquides



# Céréales (blé)



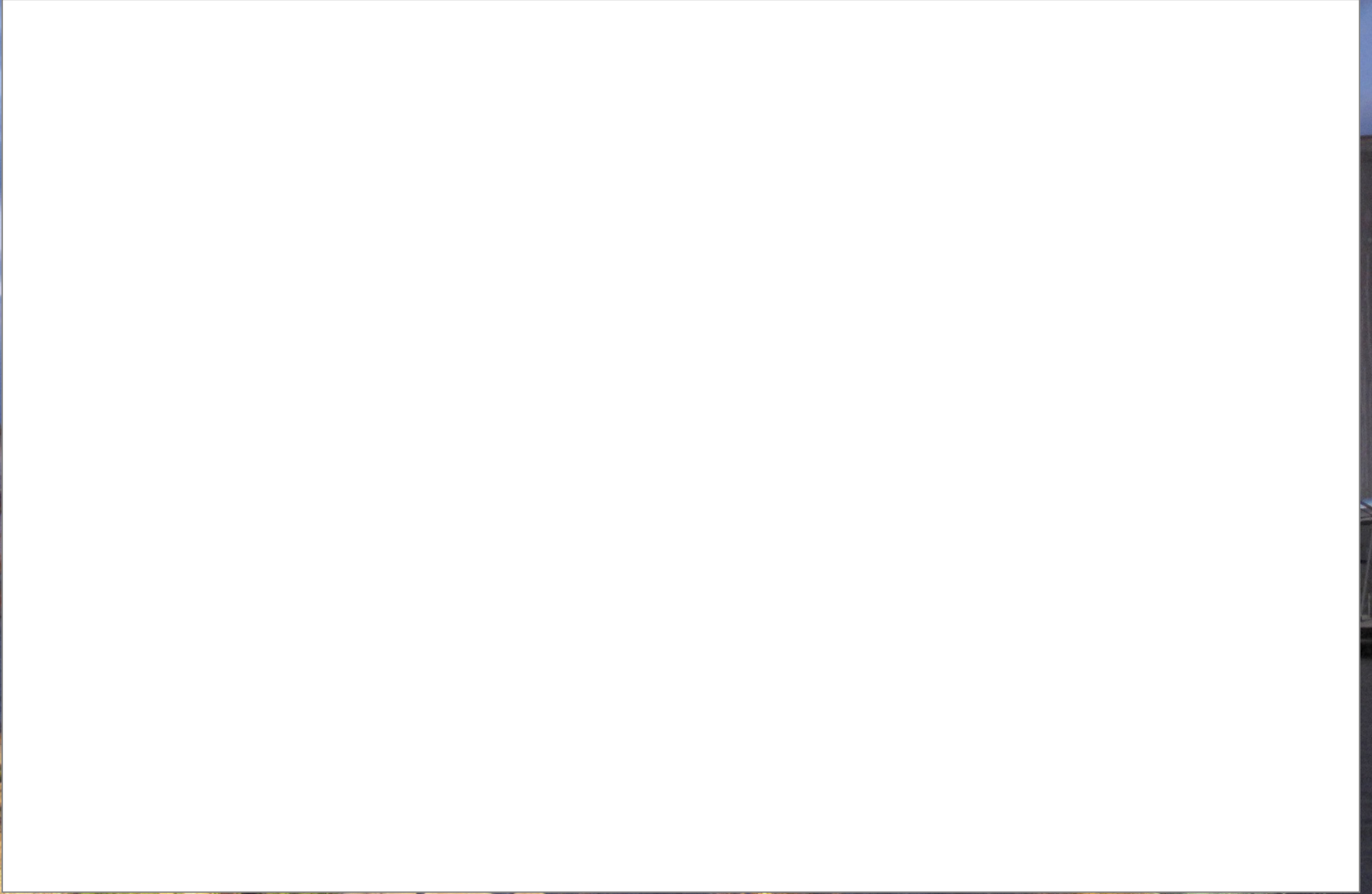
# Céréales (blé)



**HORIZON 2050**

Déficit entre production et demande (source FAO)

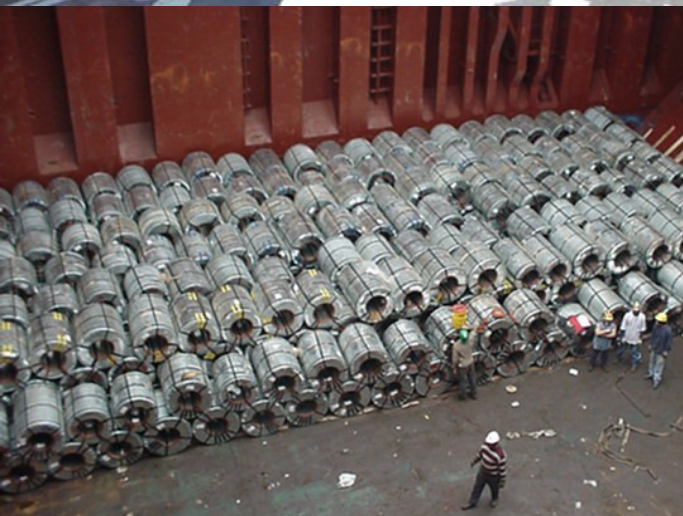
# Céréales (blé)



# Vrac : industriel, énergie, recyclage, agro-alimentaire..



# Conventionnel & Marchandises diverses



# Conventionnel & Marchandises diverses





# Eolien offshore



# Colis lourds et spéciaux





