



biogasmax

A DRIVING FORCE

- Perspectives d'utilisation du biométhane en Europe
- Le projet BIOGASMAX

Gildas LE SAUX

Chef de projet Biogasmax

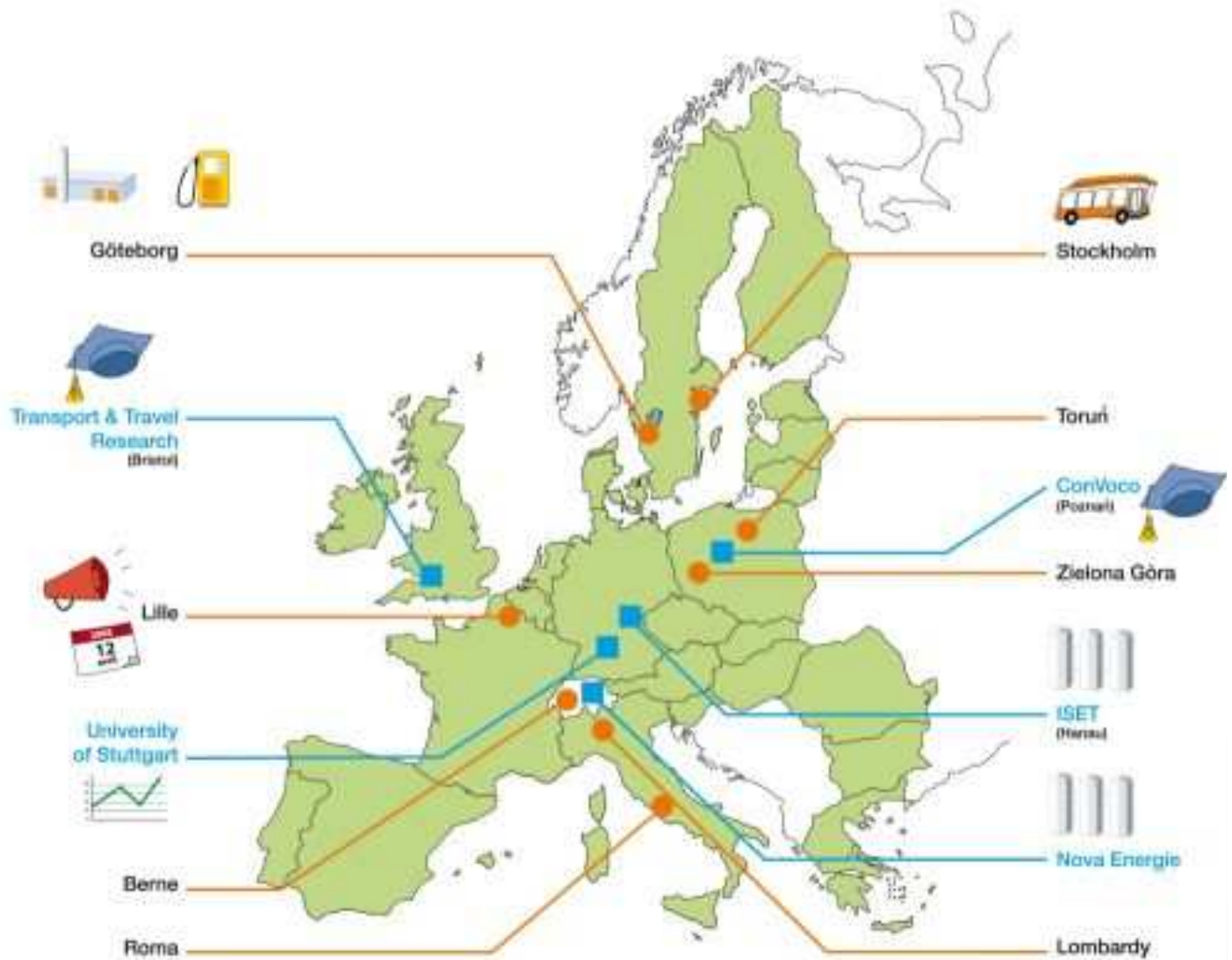
Lille Métropole Communauté Urbaine

Direction des Résidus Urbains

FRANCE



-  Partenaires d'expérimentation et de recherche
-  Partenaires transversaux
-  WP1 : gestion de projet
-  WP2 : production de biogaz
-  WP3 : concentration
-  WP4 : distribution
-  WP5 : utilisation dans les véhicules
-  WP6 : évaluation
-  WP7 : études de possibilité de transfert connaissances
-  WP8 : communication et diffusion de l'information





Centre de Valorisation Organique



Station d'épuration de Marquette

Production de biométhane-carburant à partir de gaz de CET (Malagrotta)



CO-FINANCED BY THE EUROPEAN COMMISSION

Projet de Centre de Valorisation Organique (Maccarese)






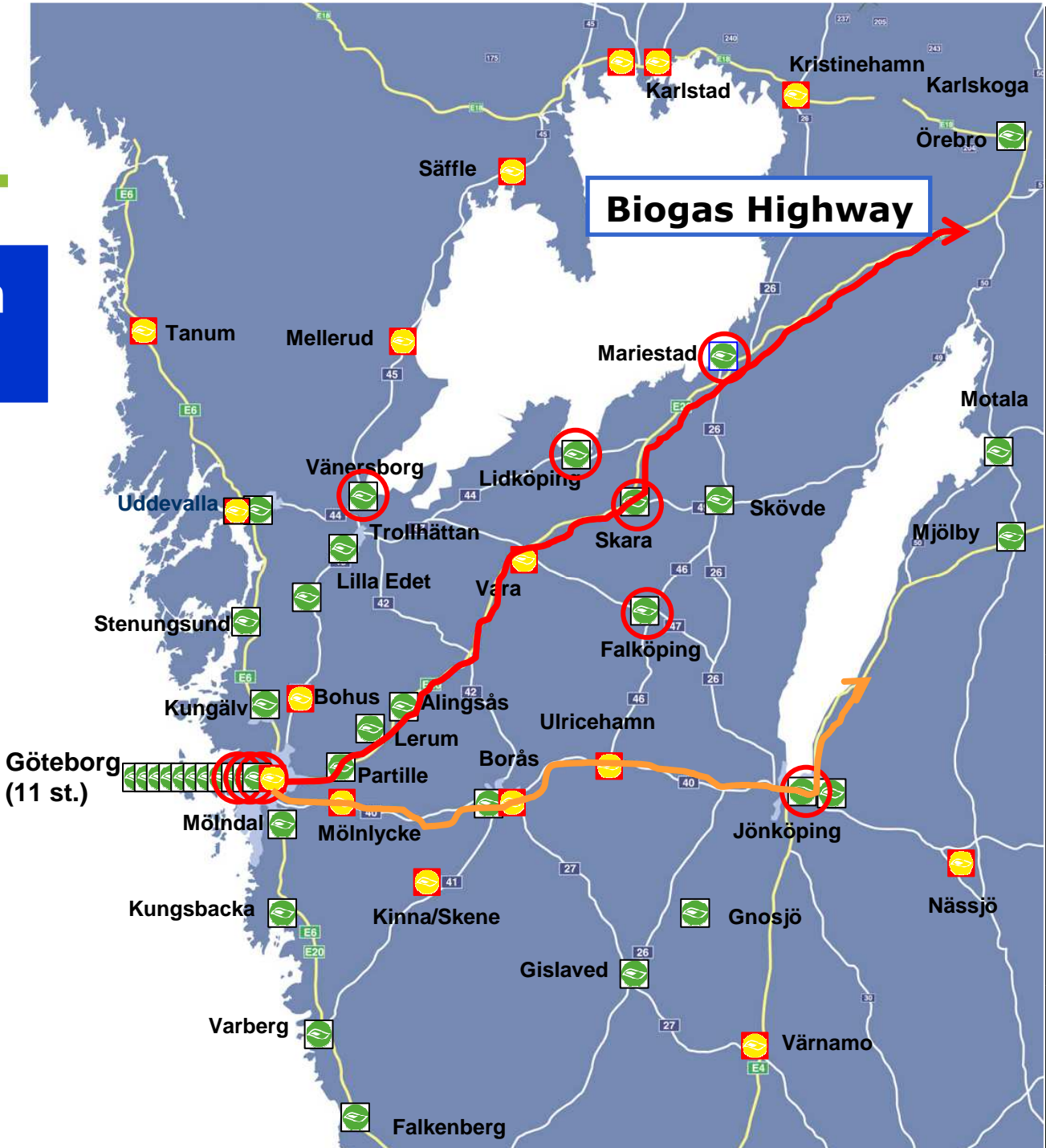
Berne (Suisse)





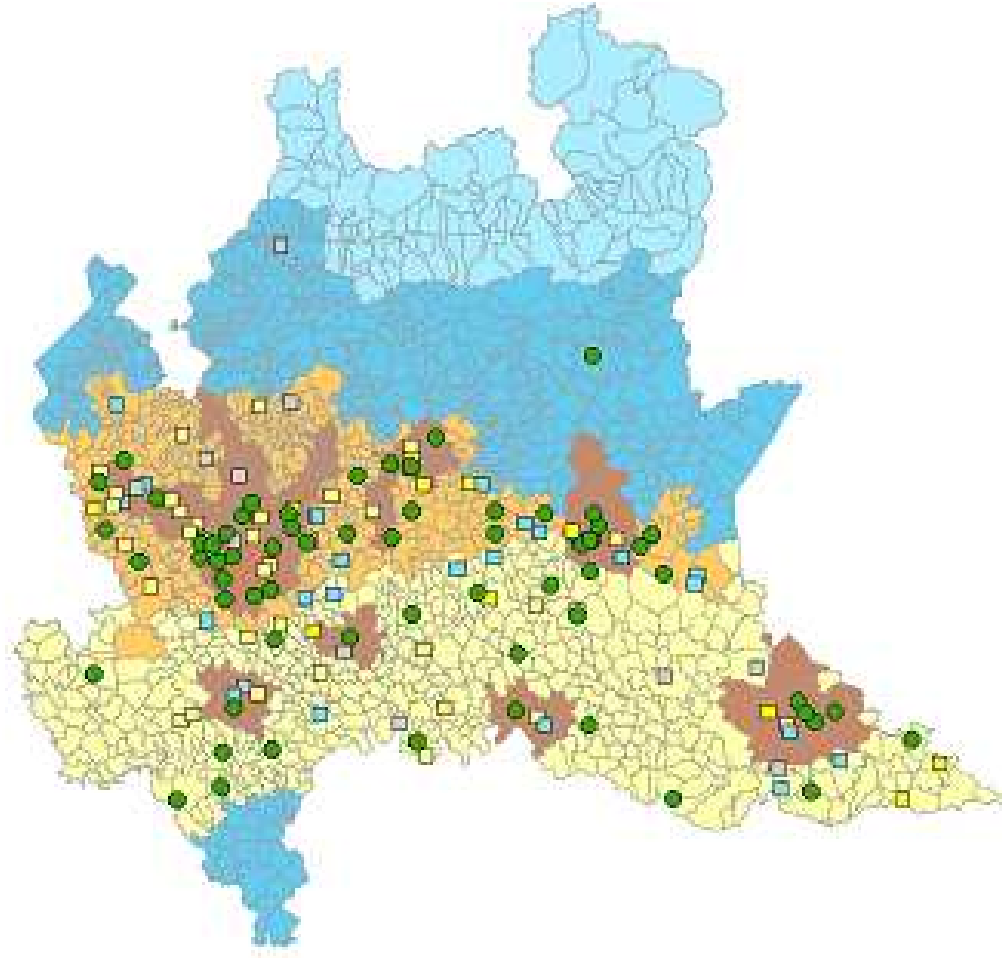
Filling stations in west Sweden

-  Existing
-  Under construction
-  Planned

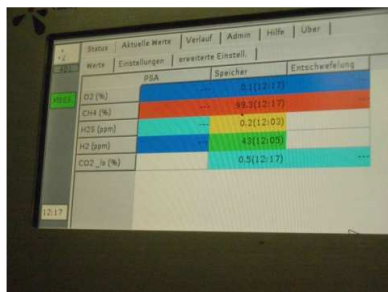


148 Stations de distribution de gaz compressé (GNV)

- 65 en fonctionnement
- 23 en attente d'ouverture
- 14 en construction
- 12 autorisés
- 34 en attente de construction



La nécessité d'harmoniser les spécifications techniques sur le gaz



| | SWEDEN | SWITZERLAND | FRANCE | |
|-----------------------------------------------|------------------------------------------------------------------|--------------------------------------------------|-----------------------------------------|---------------------|
| Parameter | | Requirement | | Unit |
| Methane (CH ₄) | > 96% volume | ≥ 96 % | | % (V/v) |
| Dew point at max. pressure of injection point | -9°C at 200 bar (32 mg/m ³) | - 8 | T < 5°C at service pressure of the grid | °C |
| Mist, dust | ... | technically free | | (-) |
| Odourisation | 13 mg/m ³ | According guidelines (SVGW G11) | 15 < THT < 40 mg/Nm ³ | (-) |
| Heating value (H _{u,n}) | 12,15 | 10.6 – 13.1 | 9.5 to 10.5 kWh/Nm ³ à 0°C | KWh/Nm ³ |
| Upper Wobbe index (W _{u,n}) | > 12.4 | 13.3 – 15.7 local deviation accepted (+0.7/-1.4) | 8.10 | KWh/Nm ³ |
| Relative density | | 0.55 – 0.7 | 0.555 < d < 0.7 | (-) |
| Oxygen (O ₂) | < 1% volume | ≤ 0.5 | < 0.01% mol. | % (v/v) |
| Carbon dioxide (CO ₂) | < 4% volume (CO ₂ + O ₂ + N ₂) | ≤ 6 | < à 2.5% mol. | % (v/v) |



Gildas LE SAUX

Lille Metropole Communauté Urbaine

glesaux@cudl-lille.fr

tél. 03 20 21 27 48



The screenshot shows the biogasmax website with the following content:

- Navigation:** Home, Links, EBA, News, Contact, Downloads, Partners, About Us, Contact Us.
- European Biomethane Fuel Conference:** 7-9 September 2009 Göteborg - SWEDEN. Participants from 30 different nations registered for the forthcoming EBFC. Come and join them!
- Sweden: proposal of national goal for biogas:** Biogas can play an important role in the ambition to decrease the emission of greenhouse gases from the transport sector in the Swedish region of Västra Götaland. There is a high potential and good conditions for production, distribution and end-use of biogas. A survey of the potential for biogas in Sweden has been made. The survey shows that it is reasonable to set a national goal of 20 TWh biogas by the year 2020. This can be produced by the 1.8 TWh biogas that is being...
- European Biogas Association (EBA) makes proposals to European Commission:** The European Biogas Association (EBA), based in Brussels, aims to promote sustainable biogas production and use in Europe. Starting with 11 members in February 2008 - all National Biogas Associations - EBA's membership comprises currently 17 national biogas associations, institutes and companies from 16 countries all across Europe including several new member states and covering all different parts of Europe. The objective of the new Brussels-based organisation is to promote an operational and...
- Biogasmax partners on videos!** Let's discover some Biogasmax partners on videos! It's a series of 11 free mini-videos. They provide key information on the issues dealing with the "biomethane chain": from organic wastes treatment to biomethane use. The programme of this "Biogasmax TV" is as follows: Why diverting biomethane? - How expanding biomethane? - Various gas and biomethane: a positive combination - From raw biogas to upgraded biomethane - What about Berni, Rome and Lila? - What about Technogas and...

Rapports techniques, formations, conférences, vidéos...

> www.biogasmax.eu